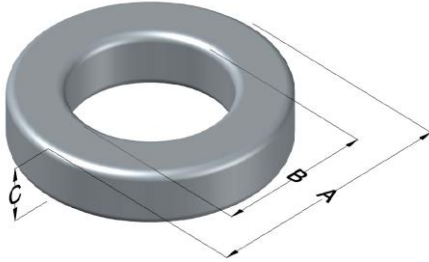




**0074737A7**

110 Delta Drive  
 Pittsburgh, PA 15238  
 NAFTA Sales: (1)800-245-3984  
 HK Sales : (852)3102-9337  
 magnetics@spang.com



Xflux Ultra Permeability ( $\mu$ )	$A_L$ (nH/T <sup>2</sup> )	Core Marking			Coating Color
		Lot Number	Part Number	Inductance Grade	
60	204 $\pm$ 8%	XXXXXX	74737A7	N/A	Brown

Dimensions	Uncoated		Coated Limits			Packaging
	(mm)	(in)	(mm)	(in)		
OD (A)	74.09	2.917	75.21	2.961	max	Cardboard cut-outs Box Qty= 24 pcs
ID (B)	45.29	1.783	44.40	1.748	min	
HT (C)	35.00	1.378	35.92	1.414	max	

Electrical Characteristics			Physical Characteristics						
Watt Loss @ 50kHz, 100mT max (mW/cm <sup>3</sup> )	DC Bias min (oersteds)		Voltage Breakdown wire to wire min (V <sub>AC</sub> )	Break Strength min (kg)	Window Area W <sub>a</sub> (mm <sup>2</sup> )	Cross Section A <sub>e</sub> (mm <sup>2</sup> )	Path Length L <sub>e</sub> (mm)	Volume V <sub>e</sub> (mm <sup>3</sup> )	Est. Weight (g)
	80%	50%							
575	90	160	3000	227.0	1,550	497	184	91,400	660

Winding Information					Temperature Rating	
Winding Length Per Turn				Wound Coil Dimensions (mm)		Curie Temp: 700°C
Winding Factor	(mm)	Winding Factor	(mm)	40% Winding Factor		Coating Temp (Continuous up to): 200°C
				OD	HT	
0%	103	40%	125	Max OD	88.6	Notes:
20%	114	45%	129	Max HT	67.1	
25%	117	50%	132	Surface Area (mm <sup>2</sup> )		
30%	119	60%	139	Unwound Core	19,000	
35%	123	70%	147	40% Winding Factor	27,000	

