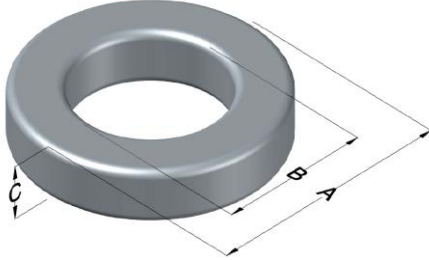




**0074727A7**

110 Delta Drive  
 Pittsburgh, PA 15238  
 NAFTA Sales: (1)800-245-3984  
 HK Sales : (852)3102-9337  
 magnetics@spang.com



Xflux Ultra Permeability ( $\mu$ )	$A_L$ (nH/T <sup>2</sup> )	Core Marking			Coating Color
		Lot Number	Part Number	Inductance Grade	
26	75 $\pm$ 8%	XXXXXX	74727A7	N/A	Brown

Dimensions	Uncoated		Coated Limits			Packaging
	(mm)	(in)	(mm)	(in)		
OD (A)	50.55	1.990	51.51	2.028	max	Cardboard cut-outs Box Qty= 70 pcs
ID (B)	24.77	0.975	24.00	0.945	min	
HT (C)	20.83	0.820	21.59	0.850	max	

Electrical Characteristics			Physical Characteristics						
Watt Loss @ 50kHz, 100mT max (mW/cm <sup>3</sup> )	DC Bias min (oersteds)		Voltage Breakdown wire to wire min (V <sub>AC</sub> )	Break Strength min (kg)	Window Area W <sub>a</sub> (mm <sup>2</sup> )	Cross Section A <sub>e</sub> (mm <sup>2</sup> )	Path Length L <sub>e</sub> (mm)	Volume V <sub>e</sub> (mm <sup>3</sup> )	Est. Weight (g)
	80%	50%							
625	215	400	3000	95.0	452	262	114	29,700	203

Winding Information					Temperature Rating			
Winding Length Per Turn				Wound Coil Dimensions (mm)			Curie Temp: 700°C	
Winding Factor	(mm)	Winding Factor	(mm)	40% Winding Factor		OD	56.0	Coating Temp (Continuous up to): 200°C
				HT	30.5			
				Completely Full Window		Max OD	60.4	Notes:
				Max HT	39.4			
0%	70.7	40%	84.0	Surface Area (mm <sup>2</sup> )				
20%	77.7	45%	85.2	Unwound Core		8,400		
25%	77.7	50%	87.5	40% Winding Factor		11,000		
30%	80.2	60%	91.1					
35%	82.3	70%	95.8					

