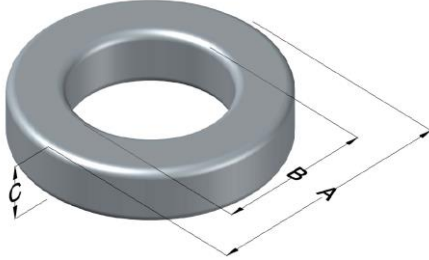




0074726A7

110 Delta Drive
 Pittsburgh, PA 15238
 NAFTA Sales: (1)800-245-3984
 HK Sales : (852)3102-9337
 magnetics@spang.com



Xflux Ultra Permeability (μ)	A_L (nH/T ²)	Core Marking			Coating Color
		Lot Number	Part Number	Inductance Grade	
60	174 \pm 8%	XXXXXX	74726A7	N/A	Brown

Dimensions	Uncoated		Coated Limits			Packaging
	(mm)	(in)	(mm)	(in)		
OD (A)	50.55	1.990	51.51	2.028	max	Cardboard cut-outs Box Qty= 70 pcs
ID (B)	24.77	0.975	24.00	0.945	min	
HT (C)	20.83	0.820	21.59	0.850	max	

Electrical Characteristics			Physical Characteristics						
Watt Loss @ 50kHz, 100mT max (mW/cm ³)	DC Bias min (oersteds)		Voltage Breakdown wire to wire min (V _{AC})	Break Strength min (kg)	Window Area W _a (mm ²)	Cross Section A _e (mm ²)	Path Length L _e (mm)	Volume V _e (mm ³)	Est. Weight (g)
	80%	50%							
575	90	160	3000	95.0	452	262	114	29,700	215

Winding Information					Temperature Rating	
Winding Length Per Turn				Wound Coil Dimensions (mm)		Curie Temp: 700°C
Winding Factor	(mm)	Winding Factor	(mm)	40% Winding Factor		Coating Temp (Continuous up to): 200°C
				OD	HT	
0%	70.7	40%	84.0	Completely Full Window	Max OD	60.4
20%	77.7	45%	85.2		Max HT	39.4
25%	77.7	50%	87.5	Surface Area (mm ²)		
30%	80.2	60%	91.1	Unwound Core		8,400
35%	82.3	70%	95.8	40% Winding Factor		11,000
Notes:						

