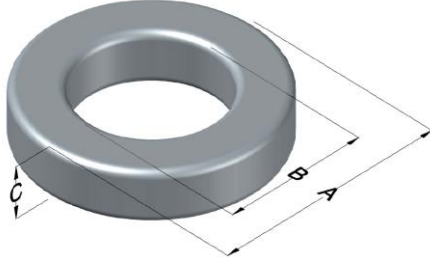




**0074717A7**

110 Delta Drive  
 Pittsburgh, PA 15238  
 NAFTA Sales: (1)800-245-3984  
 HK Sales : (852)3102-9337  
 magnetics@spang.com



Xflux Ultra Permeability ( $\mu$ )	$A_L$ (nH/T <sup>2</sup> )	Core Marking			Coating Color
		Lot Number	Part Number	Inductance Grade	
26	32 ± 8%	XXXXXX	74717A7	N/A	Brown

Dimensions	Uncoated		Coated Limits			Packaging
	(mm)	(in)	(mm)	(in)		
OD (A)	50.80	2.000	51.69	2.035	max	Cardboard cut-outs Box Qty= 90 pcs
ID (B)	31.75	1.250	30.94	1.218	min	
HT (C)	13.46	0.530	14.35	0.565	max	

Electrical Characteristics			Physical Characteristics						
Watt Loss @ 50kHz, 100mT max (mW/cm <sup>3</sup> )	DC Bias min (oersteds)		Voltage Breakdown wire to wire min (V <sub>AC</sub> )	Break Strength min (kg)	Window Area W <sub>a</sub> (mm <sup>2</sup> )	Cross Section A <sub>e</sub> (mm <sup>2</sup> )	Path Length L <sub>e</sub> (mm)	Volume V <sub>e</sub> (mm <sup>3</sup> )	Est. Weight (g)
	80%	50%							
625	215	400	3000	93.0	752	125	127	15,900	109

Winding Information					Temperature Rating		
Winding Length Per Turn				Wound Coil Dimensions (mm)		Curie Temp: 700°C	
Winding Factor	(mm)	Winding Factor	(mm)	40% Winding Factor		Coating Temp (Continuous up to): 200°C	
				OD	HT		
0%	49.5	40%	65.7	Max OD	60.6	Notes:	
20%	56.4	45%	68.1	Completely Full Window	Max HT		36.6
25%	59.6	50%	70.3		Surface Area (mm <sup>2</sup> )		
30%	61.8	60%	75.3	Unwound Core	6,400		
35%	63.6	70%	80.9	40% Winding Factor	12,000		

