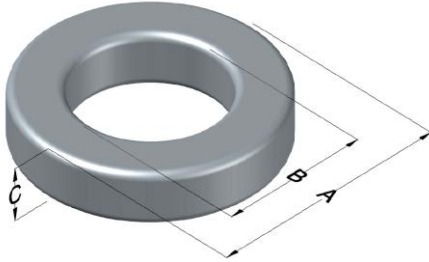




0074716A7

110 Delta Drive
 Pittsburgh, PA 15238
 NAFTA Sales: (1)800-245-3984
 HK Sales : (852)3102-9337
 magnetics@spang.com



Xflux Ultra Permeability (μ)	A_L (nH/T ²)	Core Marking			Coating Color
		Lot Number	Part Number	Inductance Grade	
60	74 ± 8%	XXXXXX	74716A7	N/A	Brown

Dimensions	Uncoated		Coated Limits			Packaging
	(mm)	(in)	(mm)	(in)		
OD (A)	50.80	2.000	51.69	2.035	max	Cardboard cut-outs Box Qty= 90 pcs
ID (B)	31.75	1.250	30.94	1.218	min	
HT (C)	13.46	0.530	14.35	0.565	max	

Electrical Characteristics			Physical Characteristics						
Watt Loss @ 50kHz, 100mT max (mW/cm ³)	DC Bias min (oersteds)		Voltage Breakdown wire to wire min (V _{AC})	Break Strength min (kg)	Window Area W _a (mm ²)	Cross Section A _e (mm ²)	Path Length L _e (mm)	Volume V _e (mm ³)	Est. Weight (g)
	80%	50%							
575	90	160	3000	93.0	752	125	127	15,900	116

Winding Information					Temperature Rating	
Winding Length Per Turn				Wound Coil Dimensions (mm)		Curie Temp: 700°C
Winding Factor	(mm)	Winding Factor	(mm)	40% Winding Factor		Coating Temp (Continuous up to): 200°C
				OD	60.6	
				HT	27.7	Notes:
				Completely Full Window		
				Max OD	60.6	
0%	49.5	40%	65.7	Max HT	36.6	
20%	56.4	45%	68.1	Surface Area (mm ²)		
25%	59.6	50%	70.3			
30%	61.8	60%	75.3	Unwound Core		6,400
35%	63.6	70%	80.9	40% Winding Factor		12,000

