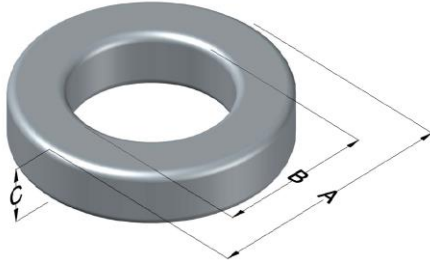




0074439A7

110 Delta Drive
 Pittsburgh, PA 15238
 NAFTA Sales: (1)800-245-3984
 HK Sales : (852)3102-9337
 magnetics@spang.com



Xflux Ultra Permeability (μ)	A_L (nH/T ²)	Core Marking			Coating Color
		Lot Number	Part Number	Inductance Grade	
60	139 \pm 8%	XXXXXX	74439A7	N/A	#N/A

Dimensions	Uncoated		Coated Limits			Packaging
	(mm)	(in)	(mm)	(in)		
OD (A)	46.74	1.840	47.63	1.875	max	Cardboard cut-outs Box Qty = TBD
ID (B)	24.13	0.950	23.32	0.918	min	
HT (C)	18.03	0.710	18.92	0.745	max	

Electrical Characteristics			Physical Characteristics						
Watt Loss @ 50kHz, 100mT max (mW/cm ³)	DC Bias min (oersteds)		Voltage Breakdown wire to wire min (V _{AC})	Break Strength min (kg)	Window Area W _a (mm ²)	Cross Section A _e (mm ²)	Path Length L _e (mm)	Volume V _e (mm ³)	Est. Weight (g)
	80%	50%							
575	90	160	3000	233.0	427	198	107	21,300	155

Winding Information					Temperature Rating		
Winding Length Per Turn				Wound Coil Dimensions (mm)		Curie Temp: #N/A	
Winding Factor	(mm)	Winding Factor	(mm)	40% Winding Factor		Coating Temp (Continuous up to): 200°C	
				OD	HT		
0%	62.2	40%	74.2	52.4	26.1	Notes:	
20%	68.3	45%	76.0	Completely Full Window	Max OD		54.8
25%	69.7	50%	77.6		Max HT		35.7
30%	71.0	60%	81.3	Surface Area (mm ²)			
35%	72.8	70%	85.6	Unwound Core	6,900		
				40% Winding Factor	9,500		

