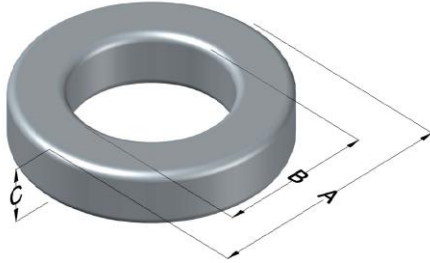




0074208A7

110 Delta Drive
 Pittsburgh, PA 15238
 NAFTA Sales: (1)800-245-3984
 HK Sales : (852)3102-9337
 magnetics@spang.com



Xflux Ultra Permeability (μ)	A_L (nH/T ²)	Core Marking			Coating Color
		Lot Number	Part Number	Inductance Grade	
26	14 ± 8%	XXXXXX	74208A7	N/A	Brown

Dimensions	Uncoated		Coated Limits			Packaging
	(mm)	(in)	(mm)	(in)		
OD (A)	20.32	0.800	21.08	0.830	max	Bulk Pack 4 bags/box Box Qty=1600 pcs
ID (B)	12.70	0.500	12.07	0.475	min	
HT (C)	6.35	0.250	7.11	0.280	max	

Electrical Characteristics			Physical Characteristics						
Watt Loss @ 50kHz, 100mT max (mW/cm ³)	DC Bias min (oersteds)		Voltage Breakdown wire to wire min (V _{AC})	Break Strength min (kg)	Window Area W _a (mm ²)	Cross Section A _e (mm ²)	Path Length L _e (mm)	Volume V _e (mm ³)	Est. Weight (g)
	80%	50%							
625	215	400	2000	29.0	114	22.1	50.9	1,120	7.99

Winding Information					Temperature Rating	
Winding Length Per Turn				Wound Coil Dimensions (mm)		Curie Temp: 700°C
Winding Factor	(mm)	Winding Factor	(mm)	40% Winding Factor		Coating Temp (Continuous up to): 200°C
				OD	22.8	
				HT	11.2	Notes:
				Completely Full Window		
				Max OD	24.0	
0%	23.2	40%	29.3	Max HT	12.9	
20%	26.1	45%	30.1	Surface Area (mm ²)		
25%	26.9	50%	31.0	Unwound Core		1,200
30%	27.7	60%	ERROR	40% Winding Factor		1,800
35%	28.5	70%	ERROR			

