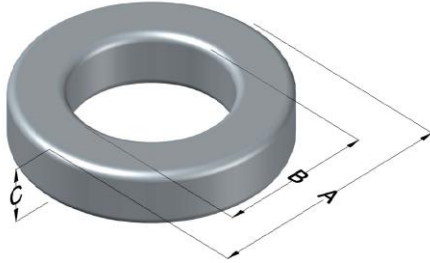




**0074121A7**

110 Delta Drive  
 Pittsburgh, PA 15238  
 NAFTA Sales: (1)800-245-3984  
 HK Sales : (852)3102-9337  
 magnetics@spang.com



Xflux Ultra Permeability ( $\mu$ )	$A_L$ (nH/T <sup>2</sup> )	Core Marking			Coating Color
		Lot Number	Part Number	Inductance Grade	
60	35 $\pm$ 8%	XXXXXX	74121A7	N/A	Brown

Dimensions	Uncoated		Coated Limits			Packaging
	(mm)	(in)	(mm)	(in)		
OD (A)	16.59	0.653	17.27	0.680	max	Bulk Pack 4 bags/box Box Qty= 2000 pcs
ID (B)	10.16	0.400	9.53	0.375	min	
HT (C)	6.35	0.250	7.11	0.280	max	

Electrical Characteristics			Physical Characteristics						
Watt Loss @ 50kHz, 100mT max (mW/cm <sup>3</sup> )	DC Bias min (oersteds)		Voltage Breakdown wire to wire min (V <sub>AC</sub> )	Break Strength min (kg)	Window Area W <sub>a</sub> (mm <sup>2</sup> )	Cross Section A <sub>e</sub> (mm <sup>2</sup> )	Path Length L <sub>e</sub> (mm)	Volume V <sub>e</sub> (mm <sup>3</sup> )	Est. Weight (g)
	80%	50%							
575	90	160	1250	23.0	71.3	19.2	41.2	793	5.96

Winding Information					Temperature Rating	
Winding Length Per Turn				Wound Coil Dimensions (mm)		Curie Temp: 700°C
Winding Factor	(mm)	Winding Factor	(mm)	40% Winding Factor		Coating Temp (Continuous up to): 200°C
				OD	19.0	
				HT	10.0	Notes:
				Completely Full Window		
				Max OD	19.6	
0%	22.0	40%	26.7	Max HT	12.9	
20%	24.3	45%	27.4	Surface Area (mm <sup>2</sup> )		
25%	24.9	50%	28.1	Unwound Core		920
30%	25.5	60%	29.6	40% Winding Factor		1,300
35%	26.1	70%	ERROR			

