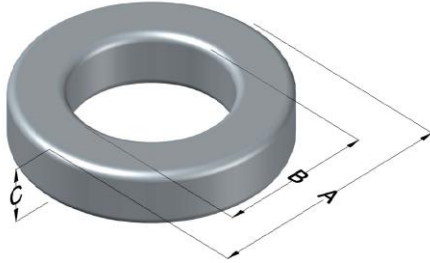




0074091A7

110 Delta Drive
 Pittsburgh, PA 15238
 NAFTA Sales: (1)800-245-3984
 HK Sales : (852)3102-9337
 magnetics@spang.com



Xflux Ultra Permeability (μ)	A_L (nH/T ²)	Core Marking			Coating Color
		Lot Number	Part Number	Inductance Grade	
26	38 ± 8%	XXXXXX	74091A7	N/A	#N/A

Dimensions	Uncoated		Coated Limits			Packaging
	(mm)	(in)	(mm)	(in)		
OD (A)	46.74	1.840	47.63	1.875	max	Cardboard cut-outs Box Qty= 120 pcs
ID (B)	28.70	1.130	27.89	1.098	min	
HT (C)	15.24	0.600	16.13	0.635	max	

Electrical Characteristics			Physical Characteristics						
Watt Loss @ 50kHz, 100mT max (mW/cm ³)	DC Bias min (oersteds)		Voltage Breakdown wire to wire min (V _{AC})	Break Strength min (kg)	Window Area W _a (mm ²)	Cross Section A _e (mm ²)	Path Length L _e (mm)	Volume V _e (mm ³)	Est. Weight (g)
	80%	50%							
625	215	400	3000	99.0	611	134	116	15,600	107

Winding Information					Temperature Rating	
Winding Length Per Turn				Wound Coil Dimensions (mm)		Curie Temp: #N/A
Winding Factor	(mm)	Winding Factor	(mm)	40% Winding Factor		Coating Temp (Continuous up to): 200°C
				OD	HT	
0%	52.0	40%	68.0	57.8	26.3	Notes:
20%	68.0	45%	68.0	Max OD	57.8	
25%	68.0	50%	70.7	Max HT	36.5	
30%	68.0	60%	76.8	Surface Area (mm ²)		
35%	68.0	70%	81.3	Unwound Core	6,200	
				40% Winding Factor	11,000	

