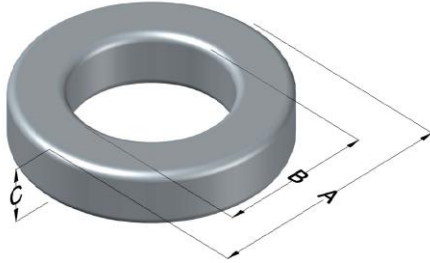




0074059A7

110 Delta Drive
 Pittsburgh, PA 15238
 NAFTA Sales: (1)800-245-3984
 HK Sales : (852)3102-9337
 magnetics@spang.com



Xflux Ultra Permeability (μ)	A_L (nH/T ²)	Core Marking			Coating Color
		Lot Number	Part Number	Inductance Grade	
60	42 ± 8%	XXXXXX	74059A7	N/A	Brown

Dimensions	Uncoated		Coated Limits			Packaging
	(mm)	(in)	(mm)	(in)		
OD (A)	22.86	0.900	23.62	0.930	max	Bulk Pack 4 bags/box Box Qty= 1000 pcs
ID (B)	13.97	0.550	13.34	0.525	min	
HT (C)	7.62	0.300	8.38	0.330	max	

Electrical Characteristics			Physical Characteristics						
Watt Loss @ 50kHz, 100mT max (mW/cm ³)	DC Bias min (oersteds)		Voltage Breakdown wire to wire min (V _{AC})	Break Strength min (kg)	Window Area W _a (mm ²)	Cross Section A _e (mm ²)	Path Length L _e (mm)	Volume V _e (mm ³)	Est. Weight (g)
	80%	50%							
575	90	160	2000	39.0	140	31.7	56.7	1,800	13.4

Winding Information					Temperature Rating	
Winding Length Per Turn				Wound Coil Dimensions (mm)		Curie Temp: 700°C
Winding Factor	(mm)	Winding Factor	(mm)	40% Winding Factor		Coating Temp (Continuous up to): 200°C
				OD	25.4	
				HT	12.4	Notes:
				Completely Full Window		
				Max OD	27.1	
0%	27.0	40%	33.7	Max HT	14.2	
20%	30.2	45%	34.6	Surface Area (mm ²)		
25%	31.0	50%	35.4			
30%	31.9	60%	ERROR	Unwound Core		1,600
35%	32.8	70%	ERROR	40% Winding Factor		2,200

