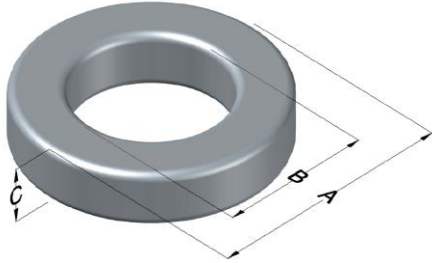




0074052A7

110 Delta Drive
 Pittsburgh, PA 15238
 NAFTA Sales: (1)800-245-3984
 HK Sales : (852)3102-9337
 magnetics@spang.com



Xflux Ultra Permeability (μ)	A_L (nH/T ²)	Core Marking			Coating Color
		Lot Number	Part Number	Inductance Grade	
26	11 ± 8%	XXXXXX	74052A7	N/A	Brown

Dimensions	Uncoated		Coated Limits			Packaging
	(mm)	(in)	(mm)	(in)		
OD (A)	12.70	0.500	13.46	0.530	max	Bulk Pack 4 bags/box Box Qty= 5000 pcs
ID (B)	7.62	0.300	6.99	0.275	min	
HT (C)	4.75	0.187	5.51	0.217	max	

Electrical Characteristics			Physical Characteristics						
Watt Loss @ 50kHz, 100mT max (mW/cm ³)	DC Bias min (oersteds)		Voltage Breakdown wire to wire min (V _{AC})	Break Strength min (kg)	Window Area W _a (mm ²)	Cross Section A _e (mm ²)	Path Length L _e (mm)	Volume V _e (mm ³)	Est. Weight (g)
	80%	50%							
625	215	400	1250	15.0	38.4	10.9	31.2	340	2.49

Winding Information					Temperature Rating	
Winding Length Per Turn				Wound Coil Dimensions (mm)		Curie Temp: 700°C
Winding Factor	(mm)	Winding Factor	(mm)	40% Winding Factor		Coating Temp (Continuous up to): 200°C
				OD	HT	
0%	17.5	40%	21.1	14.6	7.83	Notes:
20%	19.3	45%	21.6	Max OD	15.2	
25%	19.7	50%	22.1			
30%	20.2	60%	23.2	Surface Area (mm ²)		
35%	20.6	70%	24.4	Unwound Core	560	
				40% Winding Factor	780	

