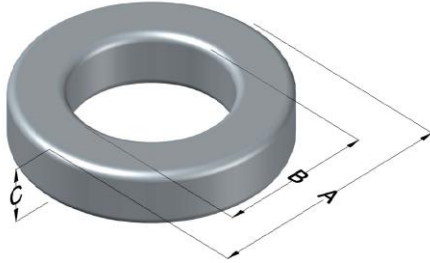




0070617A7

110 Delta Drive
 Pittsburgh, PA 15238
 NAFTA Sales: (1)800-245-3984
 HK Sales : (852)3102-9337
 magnetics@spang.com



Kool M μ Ultra Permeability (μ)	A _L (nH/T ²)	Core Marking			Coating Color
		Lot Number	Part Number	Inductance Grade	
60	189 ± 8%	XXXXXX	70617A7	N/A	Black

Dimensions	Uncoated		Coated Limits			Packaging
	(mm)	(in)	(mm)	(in)		
OD (A)	61.98	2.440	63.09	2.484	max	Cardboard cut-outs Box Qty= 45 pcs
ID (B)	32.59	1.283	31.70	1.248	min	
HT (C)	24.99	0.984	25.91	1.020	max	

Electrical Characteristics			Physical Characteristics						
Watt Loss @ 100kHz, 100mT max (mW/cm ³)	DC Bias min (oersteds)		Voltage Breakdown wire to wire min (V _{AC})	Break Strength min (kg)	Window Area W _a (mm ²)	Cross Section A _e (mm ²)	Path Length L _e (mm)	Volume V _e (mm ³)	Est. Weight (g)
	80%	50%							
250	45	100	3000	193.0	789	360	144	51,800	317

Winding Information					Temperature Rating	
Winding Length Per Turn				Wound Coil Dimensions (mm)		Curie Temp: 500°C
Winding Factor	(mm)	Winding Factor	(mm)	40% Winding Factor		Coating Temp (Continuous up to): 200°C
				OD	69.5	Notes:
0%	83.2	40%	99.3	HT	35.5	
				Completely Full Window		
20%	91.4	45%	102	Max HT	48.3	
25%	93.3	50%	104	Surface Area (mm ²)		
30%	95.0	60%	109	Unwound Core	12,000	
35%	97.5	70%	114	40% Winding Factor	17,000	

