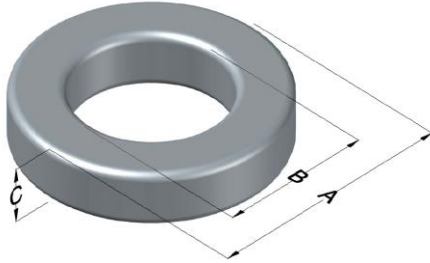




0070191A7

110 Delta Drive
 Pittsburgh, PA 15238
 NAFTA Sales: (1)800-245-3984
 HK Sales : (852)3102-9337
 magnetics@spang.com



Kool M μ Ultra Permeability (μ)	A _L (nH/T ²)	Core Marking			Coating Color
		Lot Number	Part Number	Inductance Grade	
26	60 \pm 8%	XXXXXX	70191A7	N/A	Black

Dimensions	Uncoated		Coated Limits			Packaging
	(mm)	(in)	(mm)	(in)		
OD (A)	57.15	2.250	58.04	2.285	max	Cardboard cut-outs Box Qty= 80 pcs
ID (B)	26.39	1.039	25.58	1.007	min	
HT (C)	15.24	0.600	16.13	0.635	max	

Electrical Characteristics			Physical Characteristics						
Watt Loss @ 100kHz, 100mT max (mW/cm ³)	DC Bias min (oersteds)		Voltage Breakdown wire to wire min (V _{AC})	Break Strength min (kg)	Window Area W _a (mm ²)	Cross Section A _e (mm ²)	Path Length L _e (mm)	Volume V _e (mm ³)	Est. Weight (g)
	80%	50%							
300	110	215	3000	163.0	514	229	125	28,600	170

Winding Information					Temperature Rating	
Winding Length Per Turn				Wound Coil Dimensions (mm)		Curie Temp: 500°C
Winding Factor	(mm)	Winding Factor	(mm)	40% Winding Factor		Coating Temp (Continuous up to): 200°C
				OD	61.6	Notes:
0%	64.7	40%	78.1	HT	26.9	
				Completely Full Window		
20%	70.4	45%	80.1	Max HT	34.1	
25%	73.1	50%	81.8	Surface Area (mm ²)		
30%	75.0	60%	86.1	Unwound Core	8,500	
35%	76.3	70%	90.6	40% Winding Factor	12,000	

