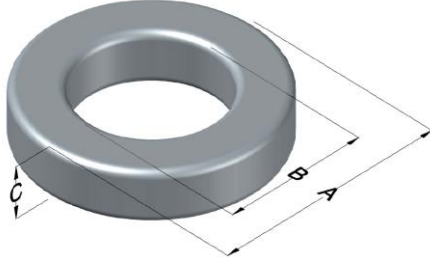




0070192A7

110 Delta Drive
 Pittsburgh, PA 15238
 NAFTA Sales: (1)800-245-3984
 HK Sales : (852)3102-9337
 magnetics@spang.com



Kool M μ Ultra Permeability (μ)	A _L (nH/T ²)	Core Marking			Coating Color
		Lot Number	Part Number	Inductance Grade	
60	138 \pm 8%	XXXXXX	70192A7	N/A	Black

Dimensions	Uncoated		Coated Limits			Packaging
	(mm)	(in)	(mm)	(in)		
OD (A)	57.15	2.250	58.04	2.285	max	Cardboard cut-outs Box Qty= 80 pcs
ID (B)	26.39	1.039	25.58	1.007	min	
HT (C)	15.24	0.600	16.13	0.635	max	

Electrical Characteristics			Physical Characteristics						
Watt Loss @ 100 kHz, 100 mT max (mW/cm ³)	DC Bias min (oersteds)		Voltage Breakdown wire to wire min (V _{AC})	Break Strength min (kg)	Window Area W _a (mm ²)	Cross Section A _e (mm ²)	Path Length L _e (mm)	Volume V _e (mm ³)	Est. Weight (g)
	80%	50%							
250	45	100	3000	163.0	514	229	125	28,600	TBD

Winding Information					Temperature Rating	
Winding Length Per Turn				Wound Coil Dimensions (mm)		Curie Temp: 500°C
Winding Factor	(mm)	Winding Factor	(mm)	40% Winding Factor		Notes:
				OD	62.5	
				HT	25.0	
				Completely Full Window		
				Max OD	66.9	
				Max HT	38.4	
0%	64.7	40%	78.6	Surface Area (mm ²)		
20%	71.7	45%	80.3	Unwound Core		8,500
25%	72.2	50%	82.5	40% Winding Factor		12,000
30%	75.2	60%	86.7			
35%	77.3	70%	91.6			

