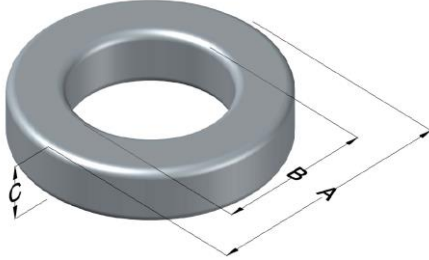




0070099A7

110 Delta Drive
 Pittsburgh, PA 15238
 NAFTA Sales: (1)800-245-3984
 HK Sales : (852)3102-9337
 magnetics@spang.com



Kool M μ Ultra Permeability (μ)	A _L (nH/T ²)	Core Marking			Coating Color
		Lot Number	Part Number	Inductance Grade	
60	111 \pm 8%	XXXXXX	70099A7	N/A	Black

Dimensions	Uncoated		Coated Limits			Packaging
	(mm)	(in)	(mm)	(in)		
OD (A)	101.60	4.000	103.00	4.055	max	Cardboard cut-outs Box Qty= 25 pcs
ID (B)	57.15	2.250	55.75	2.195	min	
HT (C)	16.51	0.650	17.91	0.705	max	

Electrical Characteristics			Physical Characteristics						
Watt Loss @ 100 kHz, 100 mT max (mW/cm ³)	DC Bias min (oersteds)		Voltage Breakdown wire to wire min (V _{AC})	Break Strength min (kg)	Window Area W _a (mm ²)	Cross Section A _e (mm ²)	Path Length L _e (mm)	Volume V _e (mm ³)	Est. Weight (g)
	80%	50%							
250	45	100	3000	181.0	2,440	358	243	87,000	TBD

Winding Information					Temperature Rating	
Winding Length Per Turn				Wound Coil Dimensions (mm)		Curie Temp: 500°C
Winding Factor	(mm)	Winding Factor	(mm)	40% Winding Factor		Notes:
				OD	112	
				HT	35.7	
				Completely Full Window		
				Max OD	116	
				Max HT	58.0	
0%	83.1	40%	112	Surface Area (mm ²)		
20%	97.1	45%	116	Unwound Core		21,000
25%	100	50%	119	40% Winding Factor		34,000
30%	104	60%	128			
35%	108	70%	138			

