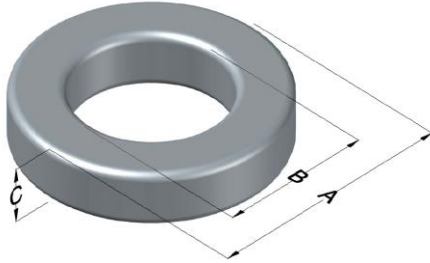




**0070071A7**

110 Delta Drive  
 Pittsburgh, PA 15238  
 NAFTA Sales: (1)800-245-3984  
 HK Sales : (852)3102-9337  
 magnetics@spang.com



Kool M $\mu$ Ultra Permeability ( $\mu$ )	A <sub>L</sub> (nH/T <sup>2</sup> )	Core Marking			Coating Color
		Lot Number	Part Number	Inductance Grade	
60	61 $\pm$ 8%	XXXXXX	70071A7	N/A	Black

Dimensions	Uncoated		Coated Limits			Packaging
	(mm)	(in)	(mm)	(in)		
OD (A)	32.79	1.291	33.66	1.325	max	Cardboard cut-outs Box Qty= 250 pcs
ID (B)	20.09	0.791	19.46	0.766	min	
HT (C)	10.67	0.420	11.43	0.450	max	

Electrical Characteristics			Physical Characteristics						
Watt Loss @ 100kHz, 100mT max (mW/cm <sup>3</sup> )	DC Bias min (oersteds)		Voltage Breakdown wire to wire min (V <sub>AC</sub> )	Break Strength min (kg)	Window Area W <sub>a</sub> (mm <sup>2</sup> )	Cross Section A <sub>e</sub> (mm <sup>2</sup> )	Path Length L <sub>e</sub> (mm)	Volume V <sub>e</sub> (mm <sup>3</sup> )	Est. Weight (g)
	250	80% 45							

Winding Information					Temperature Rating	
Winding Length Per Turn				Wound Coil Dimensions (mm)		Curie Temp: 500°C
Winding Factor	(mm)	Winding Factor	(mm)	40% Winding Factor		Coating Temp (Continuous up to): 200°C
				OD	37.7	Notes:
0%	37.1	40%	47.1	HT	17.4	
				Completely Full Window		
20%	42.1	45%	48.7	Max HT	25.4	
25%	43.3	50%	50.0	Surface Area (mm <sup>2</sup> )		
30%	44.5	60%	53.2	Unwound Core	3,100	
35%	46.0	70%	56.7	40% Winding Factor	4,700	

