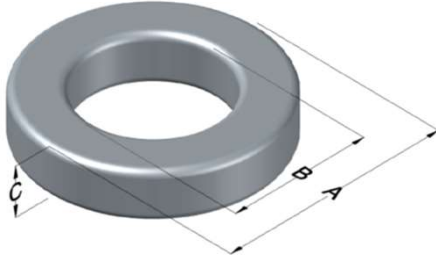




**0059933A2**

110 Delta Drive  
 Pittsburgh, PA 15238  
 NAFTA Sales: (1)800-245-3984  
 HK Sales : (852)3102-9337  
 magnetics@spang.com  
 www.mag-inc.com



Edge Permeability ( $\mu$ )	$A_L$ (nH/T <sup>2</sup> )	Core Marking			Coating Color
		Lot Number	Part Number	Inductance Grade	
14	18 $\pm$ 8%	XXXXXX	59933A2	N/A	Green

Dimensions	Uncoated		Coated Limits			Packaging
	(mm)	(in)	(mm)	(in)		
OD (A)	26.92	1.060	27.69	1.090	max	Cardboard cut-outs Box Qty= 400 pcs
ID (B)	14.73	0.580	14.10	0.555	min	
HT (C)	11.18	0.440	11.94	0.470	max	

Electrical Characteristics			Physical Characteristics						
Watt Loss @ 100kHz, 100mT max (mW/cm <sup>3</sup> )	DC Bias min (oersteds)		Voltage Breakdown wire to wire min (V <sub>AC</sub> )	Break Strength min (kg)	Window Area W <sub>a</sub> (mm <sup>2</sup> )	Cross Section A <sub>e</sub> (mm <sup>2</sup> )	Path Length L <sub>e</sub> (mm)	Volume V <sub>e</sub> (mm <sup>3</sup> )	Est. Weight (g)
	80%	50%							
1000	410	625	3000	77.0	156	65.4	63.5	4,150	31.7

Winding Information					Temperature Rating	
Winding Length Per Turn				Wound Coil Dimensions (mm)		Curie Temp: 500°C
Winding Factor	(mm)	Winding Factor	(mm)	40% Winding Factor	OD	30.9
					HT	16.7
0%	37.5	40%	44.8	Completely Full Window	Max OD	30.9
20%	41.1	45%	45.6		Max HT	21.5
25%	42.1	50%	46.8	Surface Area (mm <sup>2</sup> )		
30%	42.8	60%	49.0	Unwound Core	2,500	
35%	43.8	70%	51.4	40% Winding Factor	3,500	
Coating Temp (Continuous up to): 200°C						
Notes:						

