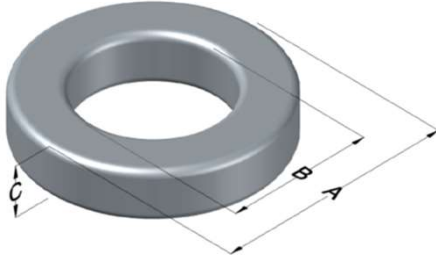




0059873A2

110 Delta Drive
 Pittsburgh, PA 15238
 NAFTA Sales: (1)800-245-3984
 HK Sales : (852)3102-9337
 magnetics@spang.com
 www.mag-inc.com



Edge Permeability (μ)	A_L (nH/T ²)	Core Marking			Coating Color
		Lot Number	Part Number	Inductance Grade	
19	21 \pm 8%	XXXXXX	59873A2	N/A	Green

Dimensions	Uncoated		Coated Limits			Packaging
	(mm)	(in)	(mm)	(in)		
OD (A)	77.80	3.063	78.94	3.108	max	Cardboard cut-outs Box Qty= 45 pcs
ID (B)	49.23	1.938	48.21	1.898	min	
HT (C)	12.70	0.500	13.84	0.545	max	

Electrical Characteristics			Physical Characteristics						
Watt Loss @ 100kHz, 100mT max (mW/cm ³)	DC Bias min (oersteds)		Voltage Breakdown wire to wire min (V _{AC})	Break Strength min (kg)	Window Area W _a (mm ²)	Cross Section A _e (mm ²)	Path Length L _e (mm)	Volume V _e (mm ³)	Est. Weight (g)
	80%	50%							
900	310	500	3000	141.0	1,830	176	196.1	34,500	185

Winding Information					Temperature Rating		
Winding Length Per Turn				Wound Coil Dimensions (mm)			Curie Temp: 500°C
Winding Factor	(mm)	Winding Factor	(mm)	40% Winding Factor	OD	88.9	Coating Temp (Continuous up to): 200°C
					HT	28.8	
0%	58.4	40%	83.1	Completely Full Window	Max OD	93.9	Notes:
20%	70.9	45%	86.9		Max HT	48.8	
25%	73.8	50%	90.1	Surface Area (mm ²)			
30%	76.4	60%	97.7	Unwound Core	12,000		
35%	80.3	70%	106	40% Winding Factor	22,000		

