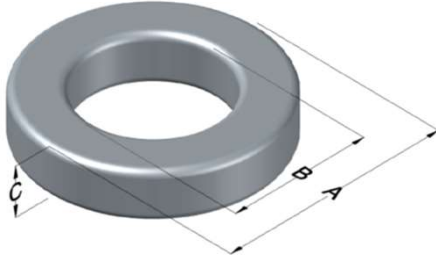




0059847A2

110 Delta Drive
 Pittsburgh, PA 15238
 NAFTA Sales: (1)800-245-3984
 HK Sales : (852)3102-9337
 magnetics@spang.com
 www.mag-inc.com



Edge Permeability (μ)	A_L (nH/T ²)	Core Marking			Coating Color
		Lot Number	Part Number	Inductance Grade	
40	21 \pm 8%	XXXXXX	59847A2	N/A	Green

Dimensions	Uncoated		Coated Limits			Packaging
	(mm)	(in)	(mm)	(in)		
OD (A)	20.32	0.800	21.08	0.830	max	Bulk Pack 4 bags/box Box Qty=1600 pcs
ID (B)	12.70	0.500	12.07	0.475	min	
HT (C)	6.35	0.250	7.11	0.280	max	

Electrical Characteristics			Physical Characteristics						
Watt Loss @ 100kHz, 100mT max (mW/cm ³)	DC Bias min (oersteds)		Voltage Breakdown wire to wire min (V _{AC})	Break Strength min (kg)	Window Area W _a (mm ²)	Cross Section A _e (mm ²)	Path Length L _e (mm)	Volume V _e (mm ³)	Est. Weight (g)
	80%	50%							
625	150	250	2000	29.0	114	22.1	50.9	1,120	8.44

Winding Information					Temperature Rating	
Winding Length Per Turn				Wound Coil Dimensions (mm)		Curie Temp: 500°C
Winding Factor	(mm)	Winding Factor	(mm)	40% Winding Factor	OD	23.5
					HT	10.7
0%	23.2	40%	29.3	Completely Full Window	Max OD	24.7
20%	26.3	45%	30.3		Max HT	15.5
25%	27.0	50%	31.1	Surface Area (mm ²)		
30%	27.8	60%	32.9	Unwound Core	1,200	
35%	28.6	70%	35.1	40% Winding Factor	1,800	
Coating Temp (Continuous up to): 200°C						
Notes:						

