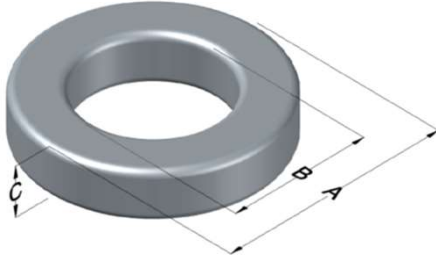




0059734A2

110 Delta Drive
 Pittsburgh, PA 15238
 NAFTA Sales: (1)800-245-3984
 HK Sales : (852)3102-9337
 magnetics@spang.com
 www.mag-inc.com



Edge Permeability (μ)	A_L (nH/T ²)	Core Marking			Coating Color
		Lot Number	Part Number	Inductance Grade	
14	48 ± 8%	XXXXXX	59734A2	N/A	Green

Dimensions	Uncoated		Coated Limits			Packaging
	(mm)	(in)	(mm)	(in)		
OD (A)	74.09	2.917	75.21	2.961	max	Cardboard cut-outs Box Qty= 24 pcs
ID (B)	45.29	1.783	44.40	1.748	min	
HT (C)	35.00	1.378	35.92	1.414	max	

Electrical Characteristics			Physical Characteristics						
Watt Loss @ 100kHz, 100mT max (mW/cm ³)	DC Bias min (oersteds)		Voltage Breakdown wire to wire min (V _{AC})	Break Strength min (kg)	Window Area W _a (mm ²)	Cross Section A _e (mm ²)	Path Length L _e (mm)	Volume V _e (mm ³)	Est. Weight (g)
	80%	50%							
1000	410	625	3000	227.0	1,550	497	183.8	91,400	687

Winding Information					Temperature Rating	
Winding Length Per Turn				Wound Coil Dimensions (mm)		Curie Temp: 500°C
Winding Factor	(mm)	Winding Factor	(mm)	40% Winding Factor	OD	85.2
					HT	50.9
0%	103	40%	126	Completely Full Window	Max OD	90.2
20%	114	45%	129		Max HT	65.9
25%	117	50%	132	Surface Area (mm ²)		
30%	119	60%	139	Unwound Core	19,000	
35%	123	70%	147	40% Winding Factor	28,000	
Coating Temp (Continuous up to): 200°C						
Notes:						

