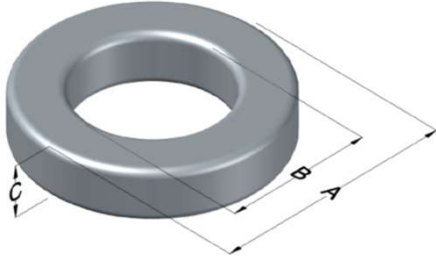




**0059618A2**

110 Delta Drive  
 Pittsburgh, PA 15238  
 NAFTA Sales: (1)800-245-3984  
 HK Sales : (852)3102-9337  
 magnetics@spang.com  
 www.mag-inc.com



Edge Permeability ( $\mu$ )	$A_L$ (nH/T <sup>2</sup> )	Core Marking			Coating Color
		Lot Number	Part Number	Inductance Grade	
75	237 ± 8%	XXXXXX	59618A2	N/A	Green

Dimensions	Uncoated		Coated Limits			Packaging
	(mm)	(in)	(mm)	(in)		
OD (A)	61.98	2.440	63.09	2.484	max	Cardboard cut-outs Box Qty= 45 pcs
ID (B)	32.59	1.283	31.70	1.248	min	
HT (C)	24.99	0.984	25.91	1.020	max	

Electrical Characteristics			Physical Characteristics						
Watt Loss @ 100kHz, 100mT max (mW/cm <sup>3</sup> )	DC Bias min (oersteds)		Voltage Breakdown wire to wire min (V <sub>AC</sub> )	Break Strength min (kg)	Window Area W <sub>a</sub> (mm <sup>2</sup> )	Cross Section A <sub>e</sub> (mm <sup>2</sup> )	Path Length L <sub>e</sub> (mm)	Volume V <sub>e</sub> (mm <sup>3</sup> )	Weight (g)
	80%	50%							
600	85	130	3000	193.0	789	362	143.6	52,000	318

Winding Information					Temperature Rating	
Winding Length Per Turn				Wound Coil Dimensions (mm)		Curie Temp: 500°C
Winding Factor	(mm)	Winding Factor	(mm)	40% Winding Factor	OD	69.5
					HT	35.5
0%	83.2	40%	99.3	Completely Full Window	Max OD	72.7
20%	91.4	45%	102		Max HT	48.3
25%	93.3	50%	104	Surface Area (mm <sup>2</sup> )		
30%	95.0	60%	109	Unwound Core	12,000	
35%	97.5	70%	114	40% Winding Factor	17,000	
Coating Temp (Continuous up to): 200°C						
Notes:						

