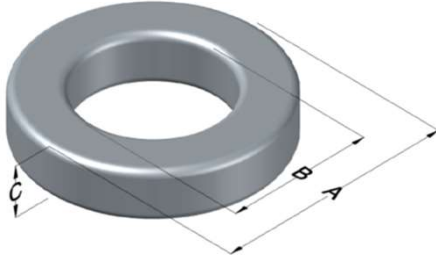




0059616A2

110 Delta Drive
 Pittsburgh, PA 15238
 NAFTA Sales: (1)800-245-3984
 HK Sales : (852)3102-9337
 magnetics@spang.com
 www.mag-inc.com



Edge Permeability (μ)	A_L (nH/T ²)	Core Marking			Coating Color
		Lot Number	Part Number	Inductance Grade	
40	126 ± 8%	XXXXXX	59616A2	N/A	Green

Dimensions	Uncoated		Coated Limits			Packaging
	(mm)	(in)	(mm)	(in)		
OD (A)	61.98	2.440	63.09	2.484	max	Cardboard cut-outs Box Qty= 45 pcs
ID (B)	32.59	1.283	31.70	1.248	min	
HT (C)	24.99	0.984	25.91	1.020	max	

Electrical Characteristics			Physical Characteristics						
Watt Loss @ 100kHz, 100mT max (mW/cm ³)	DC Bias min (oersteds)		Voltage Breakdown wire to wire min (V _{AC})	Break Strength min (kg)	Window Area W _a (mm ²)	Cross Section A _e (mm ²)	Path Length L _e (mm)	Volume V _e (mm ³)	Est. Weight (g)
	80%	50%							
625	150	250	3000	193.0	789	360	143.6	51,800	374

Winding Information					Temperature Rating	
Winding Length Per Turn				Wound Coil Dimensions (mm)		Curie Temp: 500°C
Winding Factor	(mm)	Winding Factor	(mm)	40% Winding Factor	OD	67.7
					HT	39.7
0%	83.2	40%	99.3	Completely Full Window	Max OD	72.3
20%	90.4	45%	102		Max HT	48.9
25%	93.4	50%	104	Surface Area (mm ²)		
30%	95.8	60%	109	Unwound Core	12,000	
35%	97.7	70%	115	40% Winding Factor	17,000	
Notes:						
Coating Temp (Continuous up to): 200°C						

