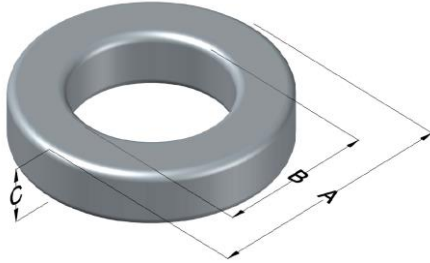




**0059599A2S01**

110 Delta Drive  
 Pittsburgh, PA 15238  
 NAFTA Sales: (1)800-245-3984  
 HK Sales : (852)3102-9337  
 magnetics@spang.com



High Bias Edge Permeability ( $\mu$ )	$A_L$ (nH/T <sup>2</sup> )	Core Marking			Coating Color
		Lot Number	Part Number	Inductance Grade	
60	124 ± 8%	XXXXXX	59599A2S01	N/A	Green

Dimensions	Uncoated		Coated Limits			Packaging
	(mm)	(in)	(mm)	(in)		
OD (A)	59.60	2.346	60.60	2.385	max	Cardboard cut-outs Box Qty= 63 pcs
ID (B)	34.00	1.338	33.00	1.299	min	
HT (C)	19.50	0.767	20.50	0.807	max	

Electrical Characteristics			Physical Characteristics						
Watt Loss @ 100kHz, 100mT max (mW/cm <sup>3</sup> )	DC Bias min (oersteds)		Voltage Breakdown wire to wire min (V <sub>AC</sub> )	Break Strength min (kg)	Window Area W <sub>a</sub> (mm <sup>2</sup> )	Cross Section A <sub>e</sub> (mm <sup>2</sup> )	Path Length L <sub>e</sub> (mm)	Volume V <sub>e</sub> (mm <sup>3</sup> )	Est. Weight (g)
	80%	50%							
700	130	200	3000	154.0	855	237	143	33,900	268

Winding Information					Temperature Rating	
Winding Length Per Turn				Wound Coil Dimensions (mm)		Curie Temp: 500°C
Winding Factor	(mm)	Winding Factor	(mm)	40% Winding Factor		Coating Temp (Continuous up to): 200°C
				OD	67.4	
				HT	30.7	Notes:
Completely Full Window				Max OD	70.8	
				Max HT	44.3	
0%	68.6	40%	85.5	Surface Area (mm <sup>2</sup> )		
20%	77.3	45%	88.2	Unwound Core		10,000
25%	79.2	50%	90.5	40% Winding Factor		15,000
30%	81.2	60%	95.8			
35%	83.6	70%	102			

