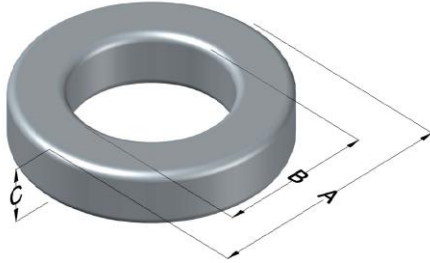




0059540A2

110 Delta Drive
 Pittsburgh, PA 15238
 NAFTA Sales: (1)800-245-3984
 HK Sales : (852)3102-9337
 magnetics@spang.com



Edge Permeability (μ)	A_L (nH/T ²)	Core Marking			Coating Color
		Lot Number	Part Number	Inductance Grade	
125	217 \pm 8%	XXXXXX	59540A2	N/A	Green

Dimensions	Uncoated		Coated Limits			Packaging
	(mm)	(in)	(mm)	(in)		
OD (A)	54.00	2.125	54.90	2.161	max	Cardboard cut-outs Box Qty= 90 pcs
ID (B)	29.00	1.141	28.10	1.106	min	
HT (C)	14.40	0.567	15.30	0.602	max	

Electrical Characteristics			Physical Characteristics						
Watt Loss @ 100kHz, 100mT max (mW/cm ³)	DC Bias min (oersteds)		Voltage Breakdown wire to wire min (V _{AC})	Break Strength min (kg)	Window Area W _a (mm ²)	Cross Section A _e (mm ²)	Path Length L _e (mm)	Volume V _e (mm ³)	Est. Weight (g)
	80%	50%							
700	50	85	3000	113.0	620	174	126	22,000	181

Winding Information					Temperature Rating	
Winding Length Per Turn				Wound Coil Dimensions (mm)		Curie Temp: 500°C
Winding Factor	(mm)	Winding Factor	(mm)	40% Winding Factor	OD	60.9
					HT	24.3
0%	57.4	40%	72.0	Completely Full Window	Max OD	63.9
20%	64.7	45%	74.0		Max HT	36.3
25%	66.5	50%	76.1	Surface Area (mm ²)		
30%	67.9	60%	80.5	Unwound Core	7,500	
35%	70.2	70%	85.5	40% Winding Factor	11,000	
Coating Temp (Continuous up to): 200°C						
Notes:						

