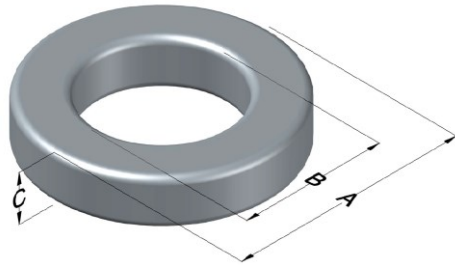




**0059382A2**

110 Delta Drive  
 Pittsburgh, PA 15238  
 NAFTA Sales: (1)800-245-3984  
 HK Sales : (852)3102-9337  
 magnetics@spang.com  
 www.mag-inc.com



Edge Permeability ( $\mu$ )	$A_L$ (nH/T <sup>2</sup> )	Core Marking			Coating Color
		Lot Number	Part Number	Inductance Grade	
26	19 ± 8%	XXXXXX	59382A2	N/A	Green

Dimensions					Packaging	
Uncoated			Coated Limits			
	(mm)	(in)	(mm)	(in)		
OD (A)	17.27	0.680	18.03	0.710	max	Bulk Pack: 4 bags/box Box Qty = 2000 Pcs
ID (B)	9.65	0.380	9.02	0.355	min	
HT (C)	6.35	0.250	7.11	0.280	max	

Electrical Characteristics			Physical Characteristics						
Watt Loss @ 100kHz, 100mT (max, mW/cm <sup>3</sup> )	DC Bias min (Oersteds)		Voltage Breakdown wire-to-wire min (V <sub>AC</sub> )	Break Strength (min, kg)	Window Area, W <sub>A</sub> (mm <sup>2</sup> )	Cross Section, A <sub>e</sub> (mm <sup>2</sup> )	Path Length, L <sub>e</sub> (mm)	Volume V <sub>e</sub> (mm <sup>3</sup> )	Weight (g)
	80%	50%							
725	240	350	1000	28.1	63.8	23.2	41.4	960	6.9

Winding Information					Temperature Rating		
Winding Length per Turn			Wound Coil Dimensions (mm)			Curie Temp (°C):	500 °C
Winding Factor	(mm)	Winding Factor	(mm)	40% Winding Factor	OD	HT	Coating Temp: (Continuous, up to; °C)
0%	23.2	40%	28.0	Completely Full Window	19.6	10.1	200 °C
20%	25.6	45%	28.6		Max OD	24.9	
25%	26.2	50%	29.3	Surface Area (mm <sup>2</sup> )	Max HT	16.3	Notes:
30%	26.6	60%	30.8		Unwound Core:	990	
35%	27.4	70%	32.4		40% Wound:	1400	

