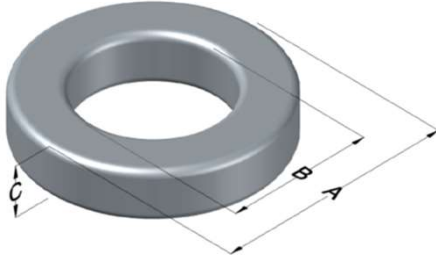




0059353A2

110 Delta Drive
 Pittsburgh, PA 15238
 NAFTA Sales: (1)800-245-3984
 HK Sales : (852)3102-9337
 magnetics@spang.com
 www.mag-inc.com



Edge Permeability (μ)	A_L (nH/T ²)	Core Marking			Coating Color
		Lot Number	Part Number	Inductance Grade	
14	12 \pm 8%	XXXXXX	59353A2	N/A	Green

Dimensions	Uncoated		Coated Limits			Packaging
	(mm)	(in)	(mm)	(in)		
OD (A)	23.57	0.928	24.33	0.958	max	Bulk Pack 4 bags/box Box Qty= 720 pcs
ID (B)	14.40	0.567	13.77	0.542	min	
HT (C)	8.89	0.350	9.65	0.380	max	

Electrical Characteristics			Physical Characteristics						
Watt Loss @ 100kHz, 100mT max (mW/cm ³)	DC Bias min (oersteds)		Voltage Breakdown wire to wire min (V _{AC})	Break Strength min (kg)	Window Area W _a (mm ²)	Cross Section A _e (mm ²)	Path Length L _e (mm)	Volume V _e (mm ³)	Est. Weight (g)
	80%	50%							
1000	410	625	2000	47.0	149	38.8	58.5	2,270	17.5

Winding Information					Temperature Rating		
Winding Length Per Turn				Wound Coil Dimensions (mm)			Curie Temp: 500°C
Winding Factor	(mm)	Winding Factor	(mm)	40% Winding Factor	OD	27.1	Coating Temp (Continuous up to): 200°C
					HT	13.9	
0%	29.9	40%	36.9	Completely Full Window	Max OD	28.5	Notes:
20%	33.5	45%	38.0		Max HT	19.5	
25%	34.3	50%	38.9	Surface Area (mm ²)			
30%	35.1	60%	41.1	Unwound Core	1,800		
35%	36.1	70%	43.6	40% Winding Factor	2,600		

