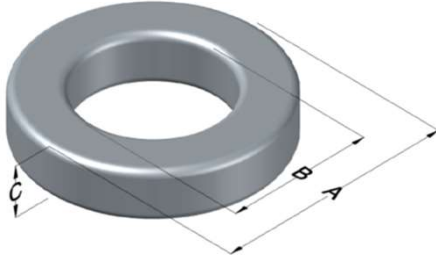




**0059351A2**

110 Delta Drive  
 Pittsburgh, PA 15238  
 NAFTA Sales: (1)800-245-3984  
 HK Sales : (852)3102-9337  
 magnetics@spang.com  
 www.mag-inc.com



Edge Permeability ( $\mu$ )	$A_L$ (nH/T <sup>2</sup> )	Core Marking			Coating Color
		Lot Number	Part Number	Inductance Grade	
60	50 $\pm$ 8%	XXXXXX	59351A2	N/A	Green

Dimensions	Uncoated		Coated Limits			Packaging
	(mm)	(in)	(mm)	(in)		
OD (A)	23.57	0.928	24.33	0.958	max	Bulk Pack 4 bags/box Box Qty= 720 pcs
ID (B)	14.40	0.567	13.77	0.542	min	
HT (C)	8.89	0.350	9.65	0.380	max	

Electrical Characteristics			Physical Characteristics						
Watt Loss @ 100kHz, 100mT max (mW/cm <sup>3</sup> )	DC Bias min (oersteds)		Voltage Breakdown wire to wire min (V <sub>AC</sub> )	Break Strength min (kg)	Window Area W <sub>a</sub> (mm <sup>2</sup> )	Cross Section A <sub>e</sub> (mm <sup>2</sup> )	Path Length L <sub>e</sub> (mm)	Volume V <sub>e</sub> (mm <sup>3</sup> )	Weight (g)
	80%	50%							
525	100	180	2000	47.0	149	38.8	58.5	2,270	18.3

Winding Information					Temperature Rating	
Winding Length Per Turn				Wound Coil Dimensions (mm)		Curie Temp: 500°C
Winding Factor	(mm)	Winding Factor	(mm)	40% Winding Factor	OD	27.1
					HT	13.9
0%	29.9	40%	36.9	Completely Full Window	Max OD	28.5
20%	33.5	45%	38.0		Max HT	19.5
25%	34.3	50%	38.9	Surface Area (mm <sup>2</sup> )		
30%	35.1	60%	41.1	Unwound Core	1,800	
35%	36.1	70%	43.6	40% Winding Factor	2,600	
Notes:						
Coating Temp (Continuous up to): 200°C						

