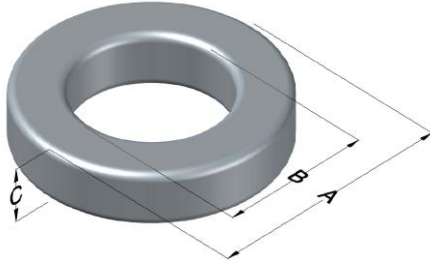




0059337A2

110 Delta Drive
 Pittsburgh, PA 15238
 NAFTA Sales: (1)800-245-3984
 HK Sales : (852)3102-9337
 magnetics@spang.com



Edge Permeability (μ)	A_L (nH/T ²)	Core Marking			Coating Color
		Lot Number	Part Number	Inductance Grade	
26	68 ± 8%	XXXXXX	59337A2	N/A	Green

Dimensions	Uncoated		Coated Limits			Packaging
	(mm)	(in)	(mm)	(in)		
OD (A)	132.56	5.219	133.96	5.274	max	Cardboard cut-outs Box Qty= 16 pcs
ID (B)	78.59	3.094	77.19	3.039	min	
HT (C)	25.40	1.000	26.80	1.055	max	

Electrical Characteristics			Physical Characteristics						
Watt Loss @ 100kHz, 100mT max (mW/cm ³)	DC Bias min (oersteds)		Voltage Breakdown wire to wire min (V _{AC})	Break Strength min (kg)	Window Area W _a (mm ²)	Cross Section A _e (mm ²)	Path Length L _e (mm)	Volume V _e (mm ³)	Est. Weight (g)
	400	80%							
	240	390							

Winding Information					Temperature Rating	
Winding Length Per Turn				Wound Coil Dimensions (mm)		Curie Temp: 500°C
Winding Factor	(mm)	Winding Factor	(mm)	40% Winding Factor		Coating Temp (Continuous up to): 200°C
				OD	150	Notes:
0%	110	40%	149	HT	50.2	
				Completely Full Window		
20%	130	45%	156	Max HT	81.4	
25%	135	50%	161	Surface Area (mm ²)		
30%	139	60%	173	Unwound Core	37,000	
35%	145	70%	186	40% Winding Factor	63,000	

