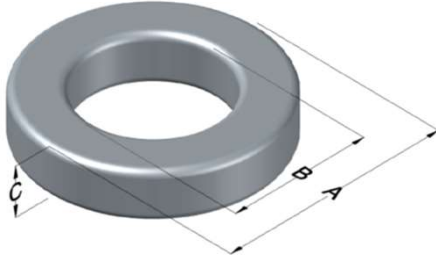




0059327A2

110 Delta Drive
 Pittsburgh, PA 15238
 NAFTA Sales: (1)800-245-3984
 HK Sales : (852)3102-9337
 magnetics@spang.com
 www.mag-inc.com



Edge Permeability (μ)	A_L (nH/T ²)	Core Marking			Coating Color
		Lot Number	Part Number	Inductance Grade	
14	13 \pm 8%	XXXXXX	59327A2	N/A	Green

Dimensions	Uncoated		Coated Limits			Packaging
	(mm)	(in)	(mm)	(in)		
OD (A)	35.81	1.410	36.70	1.445	max	Cardboard cut-outs Box Qty= 220 pcs
ID (B)	22.35	0.880	21.54	0.848	min	
HT (C)	10.46	0.412	11.35	0.447	max	

Electrical Characteristics			Physical Characteristics						
Watt Loss @ 100kHz, 100mT max (mW/cm ³)	DC Bias min (oersteds)		Voltage Breakdown wire to wire min (V _{AC})	Break Strength min (kg)	Window Area W _a (mm ²)	Cross Section A _e (mm ²)	Path Length L _e (mm)	Volume V _e (mm ³)	Est. Weight (g)
	80%	50%							
1000	410	625	3000	80.0	364	67.8	89.7	6,080	46.6

Winding Information					Temperature Rating		
Winding Length Per Turn				Wound Coil Dimensions (mm)			Curie Temp: 500°C
Winding Factor	(mm)	Winding Factor	(mm)	40% Winding Factor	OD	41.1	Coating Temp (Continuous up to): 200°C
					HT	18.0	
0%	37.9	40%	48.8	Completely Full Window	Max OD	43.3	Notes:
20%	43.4	45%	50.5		Max HT	26.8	
25%	44.7	50%	52.0	Surface Area (mm ²)			
30%	46.0	60%	55.4	Unwound Core	3,500		
35%	47.6	70%	59.2	40% Winding Factor	5,500		

