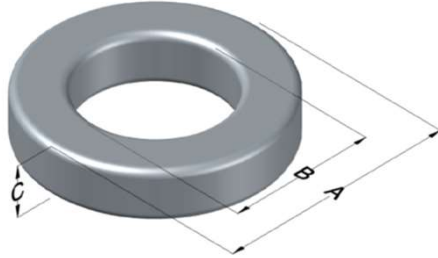




0059226A2

110 Delta Drive
 Pittsburgh, PA 15238
 NAFTA Sales: (1)800-245-3984
 HK Sales : (852)3102-9337
 magnetics@spang.com
 www.mag-inc.com



Edge Permeability (μ)	A_L (nH/T ²)	Core Marking			Coating Color
		Lot Number	Part Number	Inductance Grade	
19	11 \pm 8%	XXXXXX	59226A2	N/A	Green

Dimensions	Uncoated		Coated Limits			Packaging
	(mm)	(in)	(mm)	(in)		
OD (A)	16.59	0.653	17.27	0.680	max	Bulk Pack 4 bags/box Box Qty= 2000 pcs
ID (B)	10.16	0.400	9.53	0.375	min	
HT (C)	6.35	0.250	7.11	0.280	max	

Electrical Characteristics			Physical Characteristics						
Watt Loss @ 100kHz, 100mT max (mW/cm ³)	DC Bias min (oersteds)		Voltage Breakdown wire to wire min (V _{AC})	Break Strength min (kg)	Window Area W _a (mm ²)	Cross Section A _e (mm ²)	Path Length L _e (mm)	Volume V _e (mm ³)	Est. Weight (g)
	80%	50%							
900	310	500	1250	23.0	71.3	19.2	41.2	793	4.42

Winding Information					Temperature Rating	
Winding Length Per Turn				Wound Coil Dimensions (mm)		Curie Temp: 500°C
Winding Factor	(mm)	Winding Factor	(mm)	40% Winding Factor	OD	19.3
					HT	10.1
0%	22.0	40%	26.9	Completely Full Window	Max OD	20.3
20%	24.4	45%	27.6		Max HT	14.1
25%	25.0	50%	28.3	Surface Area (mm ²)		
30%	25.5	60%	29.8	Unwound Core	920	
35%	26.3	70%	31.5	40% Winding Factor	1,300	
Notes:						

