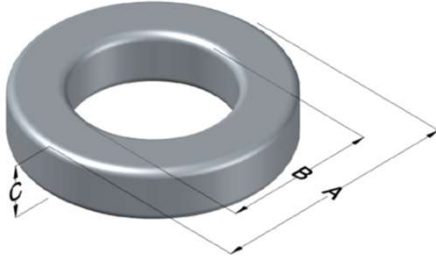




0059215A2

110 Delta Drive
 Pittsburgh, PA 15238
 NAFTA Sales: (1)800-245-3984
 HK Sales : (852)3102-9337
 magnetics@spang.com
 www.mag-inc.com



Edge Permeability (μ)	A_L (nH/T ²)	Core Marking			Coating Color
		Lot Number	Part Number	Inductance Grade	
19	24 \pm 8%	XXXXXX	59215A2	N/A	Green

Dimensions	Uncoated		Coated Limits			Packaging
	(mm)	(in)	(mm)	(in)		
OD (A)	57.15	2.250	58.04	2.285	max	Cardboard cut-outs Box Qty= 90 pcs
ID (B)	35.56	1.400	34.75	1.368	min	
HT (C)	13.97	0.550	14.86	0.585	max	

Electrical Characteristics			Physical Characteristics						
Watt Loss @ 100kHz, 100mT max (mW/cm ³)	DC Bias min (oersteds)		Voltage Breakdown wire to wire min (V _{AC})	Break Strength min (kg)	Window Area W _a (mm ²)	Cross Section A _e (mm ²)	Path Length L _e (mm)	Volume V _e (mm ³)	Est. Weight (g)
	80%	50%							
900	310	500	3000	107.0	948	144	143.0	20,700	110

Winding Information					Temperature Rating		
Winding Length Per Turn				Wound Coil Dimensions (mm)			Curie Temp: 500°C
Winding Factor	(mm)	Winding Factor	(mm)	40% Winding Factor	OD	65.2	Coating Temp (Continuous up to): 200°C
					HT	25.7	
0%	53.0	40%	70.8	Completely Full Window	Max OD	68.8	Notes:
20%	62.0	45%	73.5		Max HT	40.1	
25%	64.2	50%	75.9	Surface Area (mm ²)			
30%	66.0	60%	81.3	Unwound Core	7,700		
35%	68.8	70%	87.5	40% Winding Factor	13,000		

