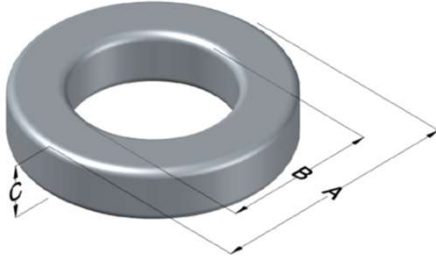




0059075A2

110 Delta Drive
 Pittsburgh, PA 15238
 NAFTA Sales: (1)800-245-3984
 HK Sales : (852)3102-9337
 magnetics@spang.com
 www.mag-inc.com



Edge Permeability (μ)	A_L (nH/T ²)	Core Marking			Coating Color
		Lot Number	Part Number	Inductance Grade	
14	35 \pm 8%	XXXXXX	59075A2	N/A	Green

Dimensions	Uncoated		Coated Limits			Packaging
	(mm)	(in)	(mm)	(in)		
OD (A)	68.00	2.677	69.42	2.733	max	Cardboard cut-outs Box Qty= 35 pcs
ID (B)	35.99	1.417	34.67	1.365	min	
HT (C)	19.99	0.787	21.41	0.843	max	

Electrical Characteristics			Physical Characteristics						
Watt Loss @ 100kHz, 100mT max (mW/cm ³)	DC Bias min (oersteds)		Voltage Breakdown wire to wire min (V _{AC})	Break Strength min (kg)	Window Area W _a (mm ²)	Cross Section A _e (mm ²)	Path Length L _e (mm)	Volume V _e (mm ³)	Est. Weight (g)
	80%	50%							
1000	410	625	3000	181.8	944	314	158.1	49,700	377

Winding Information					Temperature Rating	
Winding Length Per Turn				Wound Coil Dimensions (mm)		Curie Temp: 500°C
Winding Factor	(mm)	Winding Factor	(mm)	40% Winding Factor	OD	74.0
					HT	35.2
0%	77.6	40%	95.6	Completely Full Window	Max OD	78.6
20%	85.6	45%	98.3		Max HT	44.4
25%	88.9	50%	100	Surface Area (mm ²)		
30%	91.3	60%	106	Unwound Core	13,000	
35%	92.9	70%	112	40% Winding Factor	18,000	
Notes:						
Coating Temp (Continuous up to): 200°C						

