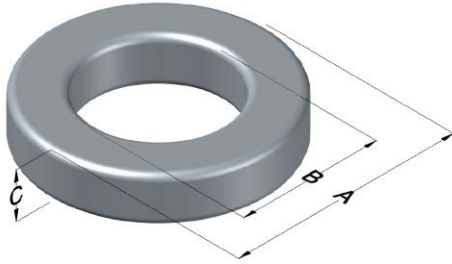




**0059071A2**

110 Delta Drive  
 Pittsburgh, PA 15238  
 NAFTA Sales: (1)800-245-3984  
 HK Sales : (852)3102-9337  
 magnetics@spang.com  
 www.mag-inc.com



Edge Permeability ( $\mu$ )	$A_L$ (nH/T <sup>2</sup> )	Core Marking			Coating Color
		Lot Number	Part Number	Inductance Grade	
60	61 ± 8%	XXXXXX	59071A2	N/A	Green

Dimensions						Packaging
Uncoated			Coated Limits			
	(mm)	(in)	(mm)	(in)		Cardboard cut-outs Box Qty = 250 Pcs
OD (A)	32.79	1.291	33.66	1.325	max	
ID (B)	20.09	0.791	19.46	0.766	min	
HT (C)	10.67	0.420	11.43	0.450	max	

Electrical Characteristics			Physical Characteristics						
Watt Loss @ 100kHz, 100mT (max, mW/cm <sup>3</sup> )	DC Bias min (Oersteds)		Voltage Breakdown wire-to-wire min (V <sub>Ac</sub> )	Break Strength (min, kg)	Window Area, W <sub>A</sub> (mm <sup>2</sup> )	Cross Section, A <sub>e</sub> (mm <sup>2</sup> )	Path Length, L <sub>e</sub> (mm)	Volume V <sub>e</sub> (mm <sup>3</sup> )	Weight (g)
	80%	50%							
525	100	180	2000	78.9	296	65.6	81.4	5340	43

Winding Information					Temperature Rating				
Winding Length per Turn				Wound Coil Dimensions (mm)		Curie Temp (°C):	500 °C		
Winding Factor	(mm)	Winding Factor	(mm)	40% Winding Factor	OD	36.8	Coating Temp: (Continuous, up to; °C)	200 °C	
					HT	17.8			
0%	37.4	40%	47.2	Completely Full Window	Max OD	46.7	Notes:		
20%	42.4	45%	48.8		Max HT	28.0			
25%	43.5	50%	50.1	Surface Area (mm <sup>2</sup> )					
30%	44.7	60%	53.2	Unwound Core:	3100				
35%	46.1	70%	56.7	40% Wound:	4900				

