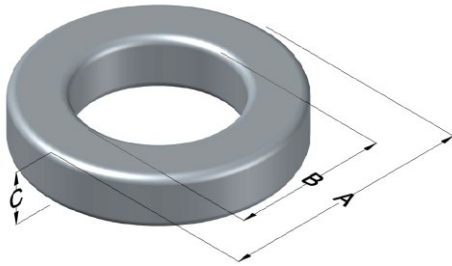




0059052A2

110 Delta Drive
 Pittsburgh, PA 15238
 NAFTA Sales: (1)800-245-3984
 HK Sales : (852)3102-9337
 magnetics@spang.com
 www.mag-inc.com



Edge Permeability (μ)	A_L (nH/T ²)	Core Marking			Coating Color
		Lot Number	Part Number	Inductance Grade	
26	12 ± 8%	XXXXXX	052A2	N/A	Green

Dimensions					Packaging
Uncoated			Coated Limits		
	(mm)	(in)	(mm)	(in)	
OD (A)	12.70	0.500	13.46	0.530	max
ID (B)	7.62	0.300	6.99	0.275	min
HT (C)	4.75	0.187	5.51	0.217	max

Cardboard cut-outs
Box Qty = 5000 Pcs

Electrical Characteristics			Physical Characteristics						
Watt Loss @ 100kHz, 100mT (max, mW/cm ³)	DC Bias min (Oersteds)		Voltage Breakdown wire-to-wire min (V _{AC})	Break Strength (min, kg)	Window Area, W _A (mm ²)	Cross Section, A _e (mm ²)	Path Length, L _e (mm)	Volume V _e (mm ³)	Weight (g)
	80%	50%							
725	240	350	1000	14.9	38.3	10.9	31.2	340	2.4

Winding Information					Temperature Rating	
Winding Length per Turn			Wound Coil Dimensions (mm)		Curie Temp (°C):	500 °C
Winding Factor	(mm)	Winding Factor	(mm)	40% Winding Factor	OD	14.6
0%	17.5	40%	21.1	Completely Full Window	HT	7.7
20%	19.3	45%	21.7		Max OD	18.2
25%	19.8	50%	22.1	Surface Area (mm ²)	Max HT	11.5
30%	20.1	60%	23.2		Unwound Core:	560
35%	20.7	70%	24.5		40% Wound:	800

Coating Temp: (Continuous, up to; °C) 200 °C

Notes:

