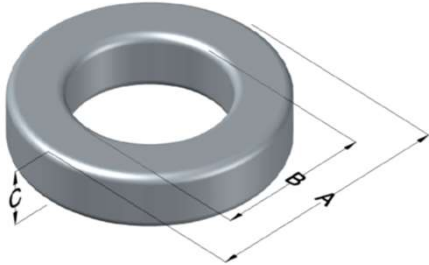




0058342A2

110 Delta Drive
 Pittsburgh, PA 15238
 NAFTA Sales: (1)800-245-3984
 HK Sales : (852)3102-9337
 magnetics@spang.com
 www.mag-inc.com



High Flux Permeability (μ)	A_L (nH/T ²)	Core Marking			Coating Color
		Lot Number	Part Number	Inductance Grade	
19	50 ± 8%	XXXXXX	58342A2	N/A	Khaki

Dimensions	Uncoated		Coated Limits			Packaging
	(mm)	(in)	(mm)	(in)		
OD (A)	132.56	5.219	133.96	5.274	max	Cardboard cut-outs Box Qty= 16 pcs
ID (B)	78.59	3.094	77.19	3.039	min	
HT (C)	25.40	1.000	26.80	1.055	max	

Electrical Characteristics			Physical Characteristics						
Watt Loss @ 100kHz, 100mT max (mW/cm ³)	DC Bias min (oersteds)		Voltage Breakdown wire to wire min (V _{AC})	Break Strength min (kg)	Window Area W _a (mm ²)	Cross Section A _e (mm ²)	Path Length L _e (mm)	Volume V _e (mm ³)	Weight (g)
	80%	50%							
1800	240	475	3000	227.0	4,680	677	324.3	219,000	1,200

Winding Information					Temperature Rating	
Winding Length Per Turn				Wound Coil Dimensions (mm)		Curie Temp: 500°C
Winding Factor	(mm)	Winding Factor	(mm)	40% Winding Factor	OD	150
					HT	50.2
0%	110	40%	149	Completely Full Window	Max OD	157
20%	130	45%	156		Max HT	81.4
25%	135	50%	161	Surface Area (mm ²)		
30%	139	60%	173	Unwound Core	37,000	
35%	145	70%	186	40% Winding Factor	63,000	
Coating Temp (Continuous up to): 200°C						
Notes:						

