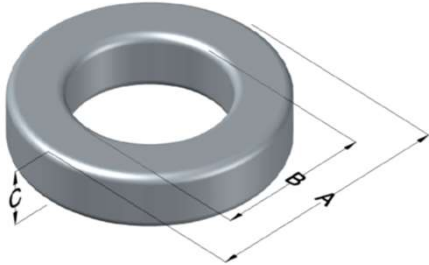




0058170A2

110 Delta Drive
 Pittsburgh, PA 15238
 NAFTA Sales: (1)800-245-3984
 HK Sales : (852)3102-9337
 magnetics@spang.com
 www.mag-inc.com



High Flux Permeability (μ)	A_L (nH/T ²)	Core Marking			Coating Color
		Lot Number	Part Number	Inductance Grade	
19	58 ± 8%	XXXXXX	58170A2	N/A	Khaki

Dimensions	Uncoated		Coated Limits			Packaging
	(mm)	(in)	(mm)	(in)		
OD (A)	165.10	6.500	167.21	6.583	max	Cardboard cut-outs Box Qty= 8 pcs
ID (B)	88.90	3.500	86.89	3.421	min	
HT (C)	25.40	1.000	27.31	1.075	max	

Electrical Characteristics			Physical Characteristics						
Watt Loss @ 100kHz, 100mT max (mW/cm ³)	DC Bias min (oersteds)		Voltage Breakdown wire to wire min (V _{AC})	Break Strength min (kg)	Window Area W _a (mm ²)	Cross Section A _e (mm ²)	Path Length L _e (mm)	Volume V _e (mm ³)	Weight (g)
	80%	50%							
1800	240	475	3000	TBD	5,930	946	386.7	366,000	2,050

Winding Information					Temperature Rating	
Winding Length Per Turn				Wound Coil Dimensions (mm)		Curie Temp: 500°C
Winding Factor	(mm)	Winding Factor	(mm)	40% Winding Factor	OD	185
					HT	53.7
0%	135	40%	179	Completely Full Window	Max OD	194
20%	158	45%	187		Max HT	88.9
25%	163	50%	192	Surface Area (mm ²)		
30%	168	60%	206	Unwound Core	54,000	
35%	175	70%	222	40% Winding Factor	89,000	
Notes:						
Coating Temp (Continuous up to): 200°C						

