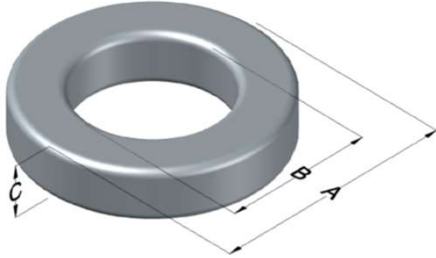




0055744A2

110 Delta Drive
 Pittsburgh, PA 15238
 NAFTA Sales: (1)800-245-3984
 HK Sales : (852)3102-9337
 magnetics@spang.com
 www.mag-inc.com



MPP Permeability (μ)	A_L (nH/T ²)	Core Marking			Coating Color
		Lot Number	Part Number	Inductance Grade	
19	64 ± 8%	XXXXXX	55744A2	N/A	Grey

Dimensions	Uncoated		Coated Limits			Packaging
	(mm)	(in)	(mm)	(in)		
OD (A)	74.09	2.917	75.21	2.961	max	Cardboard cut-outs Box Qty= 24 pcs
ID (B)	45.29	1.783	44.40	1.748	min	
HT (C)	35.00	1.378	35.92	1.414	max	

Electrical Characteristics			Physical Characteristics						
Watt Loss @ 100kHz, 100mT max (mW/cm ³)	DC Bias min (oersteds)		Voltage Breakdown wire to wire min (V _{AC})	Break Strength min (kg)	Window Area W _a (mm ²)	Cross Section A _e (mm ²)	Path Length L _e (mm)	Volume V _e (mm ³)	Weight (g)
	80%	50%							
1600	190	320	3000	227.0	1,550	498	183.8	91,600	578

Winding Information					Temperature Rating	
Winding Length Per Turn				Wound Coil Dimensions (mm)		Curie Temp: 460°C
Winding Factor	(mm)	Winding Factor	(mm)	40% Winding Factor	OD	84.4
					HT	49.7
0%	103	40%	125	Completely Full Window	Max OD	89.0
20%	114	45%	129		Max HT	68.1
25%	117	50%	132	Surface Area (mm ²)		
30%	119	60%	139	Unwound Core		19,000
35%	123	70%	147	40% Winding Factor		28,000
Notes:						
Coating Temp (Continuous up to): 200°C						

