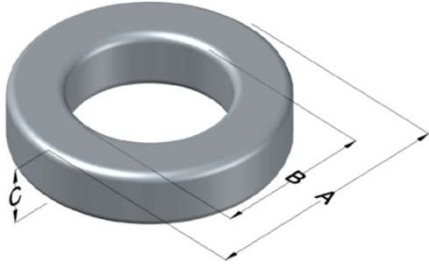




**0055387A2**

110 Delta Drive  
 Pittsburgh, PA 15238  
 NAFTA Sales: (1)800-245-3984  
 HK Sales : (852)3102-9337  
 magnetics@spang.com  
 www.mag-inc.com



MPP Permeability ( $\mu$ )	$A_L$ (nH/T <sup>2</sup> )	Core Marking			Coating Color
		Lot Number	Part Number	Inductance Grade	
19	14 ± 8%	XXXXXX	55387A2	N/A	Grey

Dimensions	Uncoated		Coated Limits			Packaging
	(mm)	(in)	(mm)	(in)		
OD (A)	17.27	0.680	18.03	0.710	max	Bulk Pack 4 bags/box Box Qty= 2000 pcs
ID (B)	9.65	0.380	9.02	0.355	min	
HT (C)	6.35	0.250	7.11	0.280	max	

Electrical Characteristics			Physical Characteristics						
Watt Loss @ 100kHz, 100mT max (mW/cm <sup>3</sup> )	DC Bias min (oersteds)		Voltage Breakdown wire to wire min (V <sub>AC</sub> )	Break Strength min (kg)	Window Area W <sub>a</sub> (mm <sup>2</sup> )	Cross Section A <sub>e</sub> (mm <sup>2</sup> )	Path Length L <sub>e</sub> (mm)	Volume V <sub>e</sub> (mm <sup>3</sup> )	Weight (g)
	80%	50%							
1600	190	320	1250	28.0	63.9	23.3	41.1	960	6.51

Winding Information					Temperature Rating		
Winding Length Per Turn				Wound Coil Dimensions (mm)			Curie Temp: 460°C
Winding Factor	(mm)	Winding Factor	(mm)	40% Winding Factor		OD	20.0
				HT	10.1		
0%	23.2	40%	27.9	Completely Full Window	Max OD	20.0	Coating Temp (Continuous up to): 200°C
20%	25.6	45%	28.5		Max HT	13.1	
25%	26.2	50%	29.2	Surface Area (mm <sup>2</sup> )			Notes:
30%	26.6	60%	30.7	Unwound Core		990	
35%	27.3	70%	32.2	40% Winding Factor		1,400	

