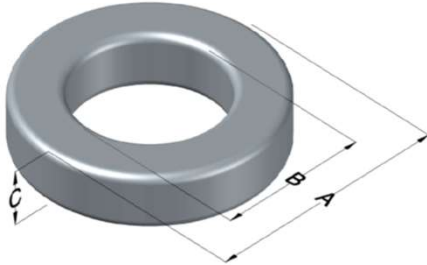




**0055100A2**

110 Delta Drive  
 Pittsburgh, PA 15238  
 NAFTA Sales: (1)800-245-3984  
 HK Sales : (852)3102-9337  
 magnetics@spang.com  
 www.mag-inc.com



MPP Permeability ( $\mu$ )	$A_L$ (nH/T <sup>2</sup> )	Core Marking			Coating Color
		Lot Number	Part Number	Inductance Grade	
40	74 $\pm$ 8%	XXXXXX	55100A2	N/A	Grey

Dimensions	Uncoated		Coated Limits			Packaging
	(mm)	(in)	(mm)	(in)		
OD (A)	101.60	4.000	103.00	4.055	max	Cardboard cut-outs Box Qty= 25 pcs
ID (B)	57.15	2.250	55.75	2.195	min	
HT (C)	16.51	0.650	17.91	0.705	max	

Electrical Characteristics			Physical Characteristics						
Watt Loss @ 100kHz, 100mT max (mW/cm <sup>3</sup> )	DC Bias min (oersteds)		Voltage Breakdown wire to wire min (V <sub>AC</sub> )	Break Strength min (kg)	Window Area W <sub>a</sub> (mm <sup>2</sup> )	Cross Section A <sub>e</sub> (mm <sup>2</sup> )	Path Length L <sub>e</sub> (mm)	Volume V <sub>e</sub> (mm <sup>3</sup> )	Weight (g)
	800	80%							
	80	135							

Winding Information					Temperature Rating	
Winding Length Per Turn				Wound Coil Dimensions (mm)		Curie Temp: 460°C
Winding Factor	(mm)	Winding Factor	(mm)	40% Winding Factor	OD	114
					HT	34.7
0%	83.1	40%	111	Completely Full Window	Max OD	120
20%	97.6	45%	116		Max HT	57.1
25%	101	50%	120	Surface Area (mm <sup>2</sup> )		
30%	104	60%	128	Unwound Core		21,000
35%	108	70%	138	40% Winding Factor		35,000
Notes:						

